

Heritage Village



Located on
Power House Rd.
Victoria, NL
Route 70

Open:

July 1 – August 31



Village School



N3 Pony "Jack"



Theodore & Pebbles

Heritage Village in Victoria is operated by the Victoria Heritage/Tourism Society. The Village has a general store, salt box house, forge, post office, barber shop, village hall, fire hall, church, school, railway museum, NL pony barn museum, carriage house and a POW Camp Museum

The oldest operating hydro electric plant, which was built in 1904, is a registered historic site.

Heritage Village is built on the site of a World War Two POW camp which was built in 1940 and dismantled in 1943.

The Village is surrounded by a 1500 ft. boardwalk. Public washrooms are available.

The Country Church is available for weddings, anniversaries, etc.



Heritage Village



*Viola's General Store,
Book Store & Post Office*



POW & Military Museum



Railway Museum



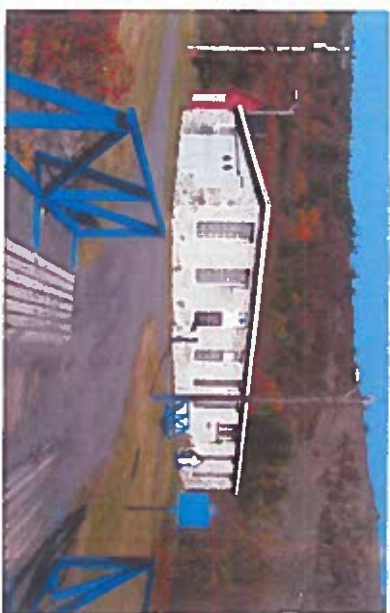
Village Barber Shop



*Forge, Workshop &
NE Pony Barn*



NE Pony Barn



NE Power Station



Village Church